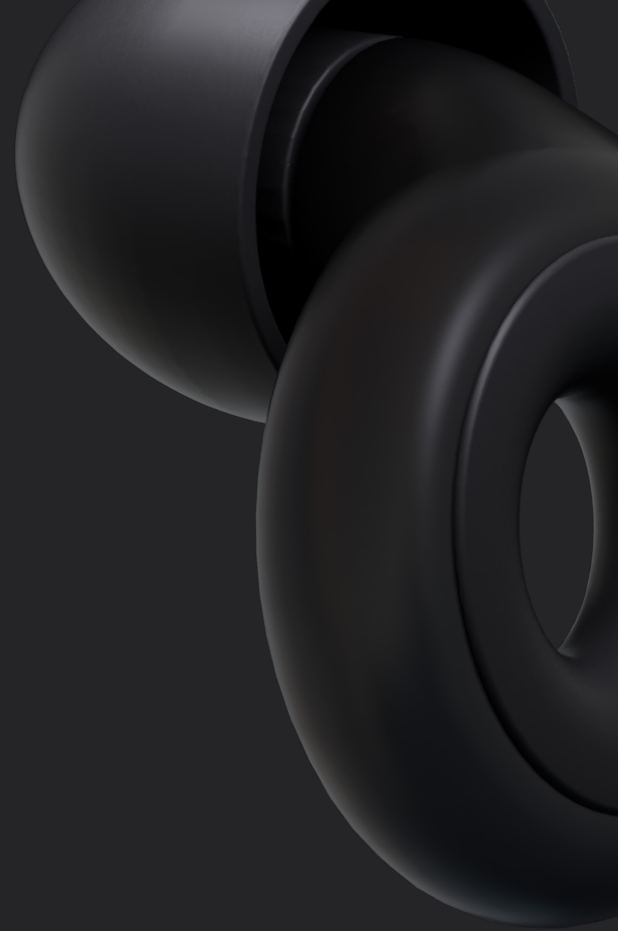
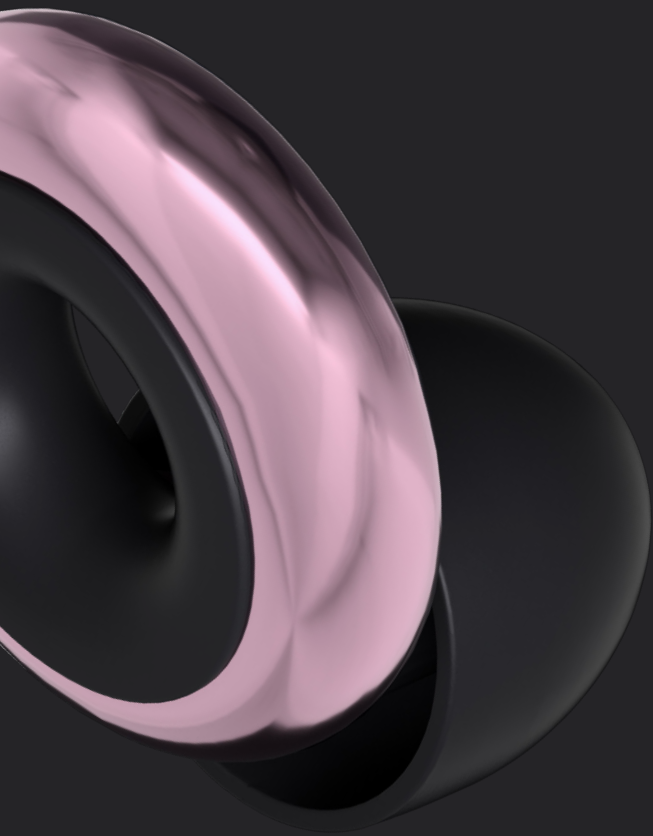


**Using your new
Loop earplugs**

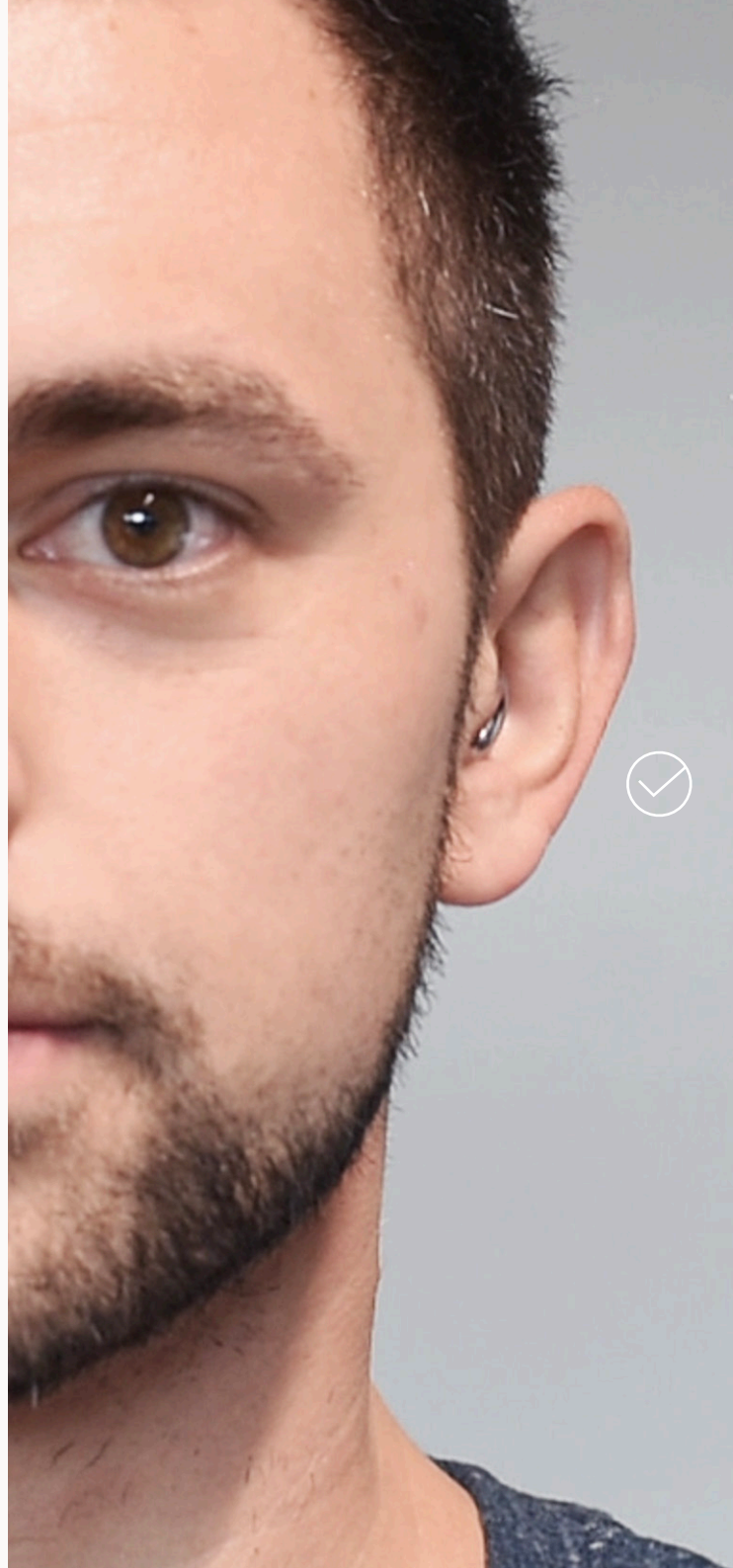


How to insert your Loop earplugs

1. Gently push the earplug into your ear and turn clockwise.
2. The Loop earplug should sit inside your ear and not stick out.



3. It should also not be visible from the front.



Finding the perfect fit

Loop earplugs come with a size medium tip already attached.

You'll find 3 more sizes (XS, S & L) inside the box.

Loop Experience Plus & Engage Plus come with 3 extra pairs of foam ear tips.

Loop tips sizes

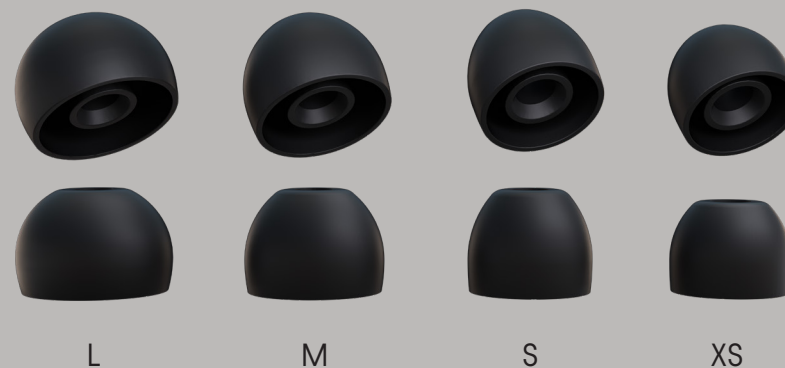
To find the perfect fit, try all sizes from XS to L to see which feels best.

A good fit feels secure and comfortable, sealing off your ear canal.

If the Loop sticks out or hurts, try the next size down.

If the Loop does not feel secure or like it's not sealing off your ear canal sufficiently, go up a size.

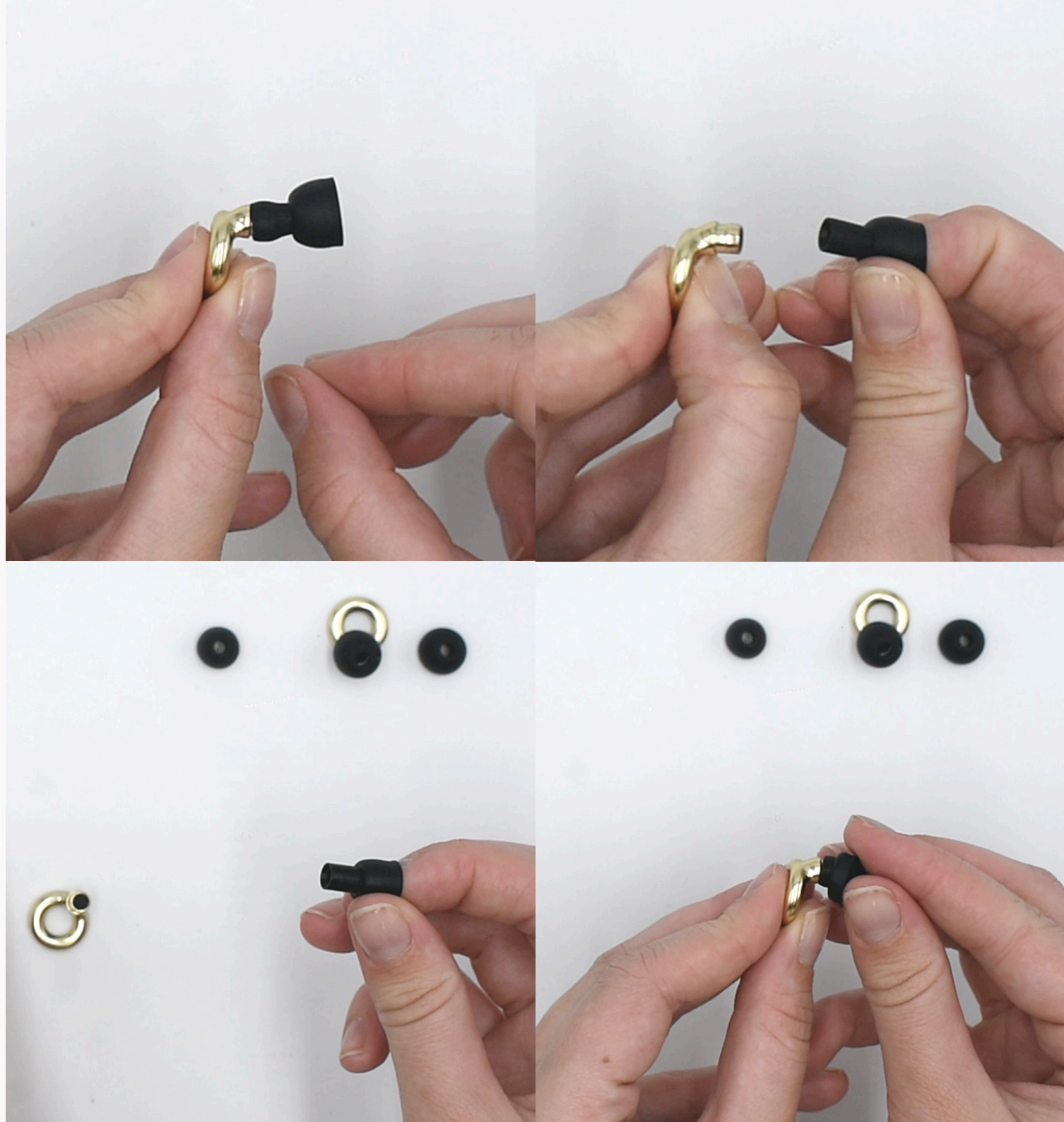
Hearing yourself talking more loudly is a sign of a good fit.



Changing your ear tips

To remove your current ear tip, turn the tip inside out and gently remove it.

To replace it with a new tip, turn the tip inside out, align and push.



Cleaning your Loops

For Loop Experience (Plus) & Engage (Plus):

1. Only the tips should be fully submerged in water.
2. Use a damp cloth to clean your Loops.
3. Don't use harsh chemicals as this could damage the earplug.



For Loop Quiet

1. Loop Quiet can be completely submerged in water, so don't worry about getting them wet.
2. Clean under running water or use a damp cloth to reach those tricky spots.



How to insert Loop Mute

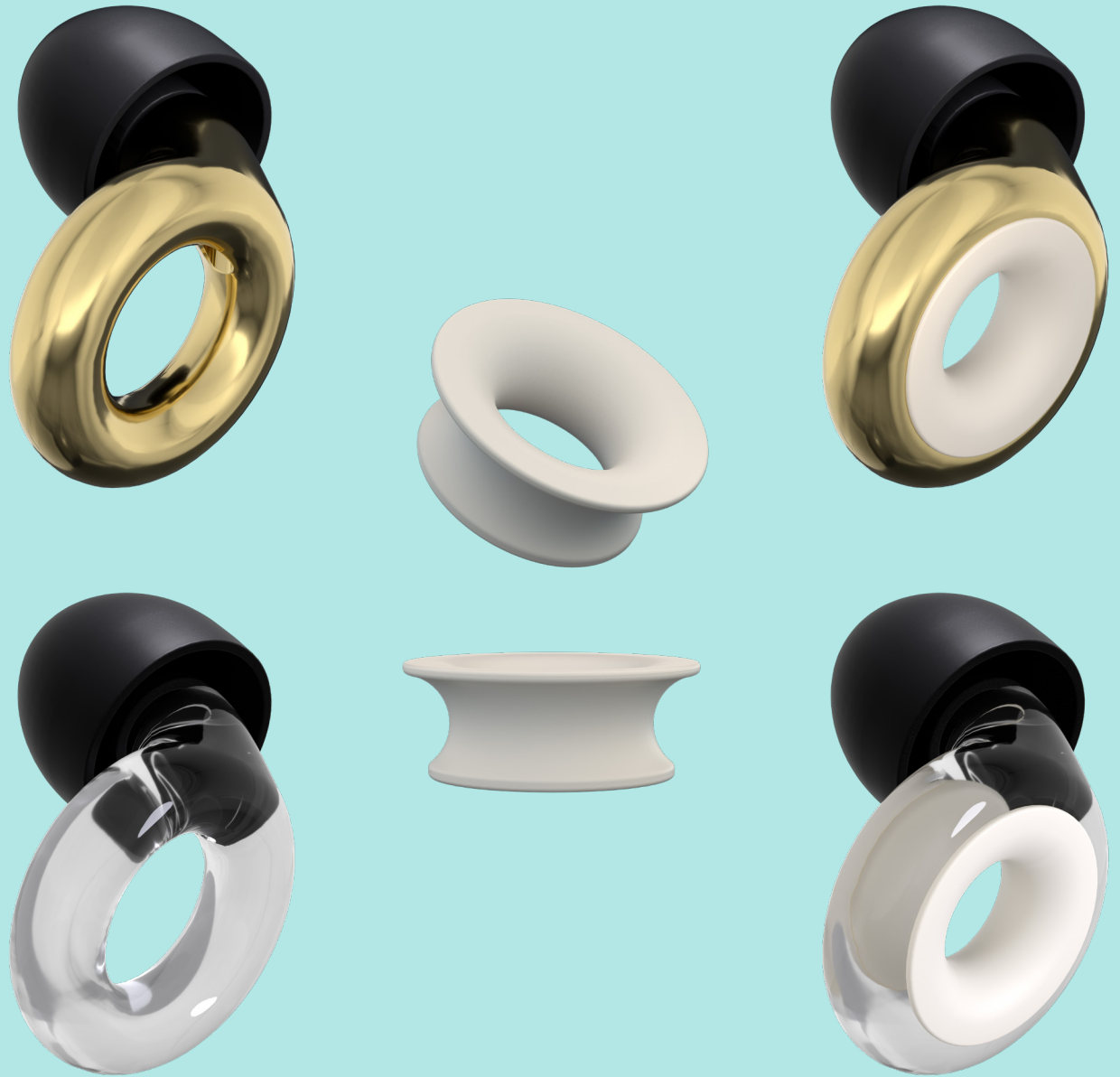
**Both Loop Experience
(Plus) & Engage
(Plus) come with
an extra accessory
called Loop Mute.**

Mute reduces noise by an
additional 5 decibels, giving you
added coverage on demand.

To insert the Mute, simply align and
push the small side of the Mute
into the center of your Loop.

Make sure the Mute isn't
sticking out on either side.

Push the small side of the Mute into
the middle of your Loop, ensuring
it doesn't stick out on any side.



Loop on the go

Every pair of Loops comes with a small container called a Carry Case.

The Carry Case is a portable case designed to keep your Loops safe and accessible on the go.

Attach the Carry Case to your keys, lanyard or wherever you can easily access your Loops.



Questions?

Get in touch with Loop's Customer Happiness Team today via Amazon.
We're happy to help.